

Seal (Cap) Materials	Temp. Range		
15% Glass, 5% Moly Reinforced PTFE	-200°C	to	260°C
40% Bronze Reinforced PTFE	-200C	to	260°C
Loader Materials			
Nitrile (NBR)	-40°C	to	120°C
Viton™/Fluorocarbon (FKM)	-26°C	to	204°C
Hydrogenated Nitrile (HNBR)	-40°C	to	160°C
Ethylene Propylene (EPDM)	-54°C	to	150°C
Back-up Ring Material:			
Nylon/Polyamide (PA)	-54°C	to	121°C
Polytetrafluoroethylene (PTFE)	-260°C	to	260°C
KasPex™ PEEK	-70°C	to	260°C

Product Description

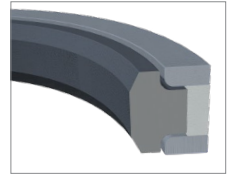
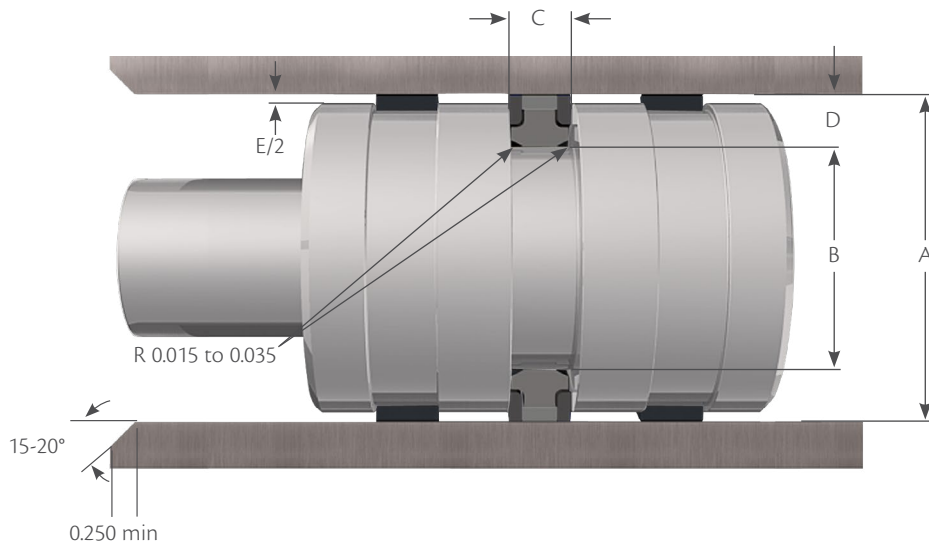
Capped T-seals are double-acting, high pressure, high performance piston seals. They are designed to accommodate large extrusion gaps. The major benefits of this design are its excellent extrusion resistance, low friction, and low wear, which are all presented in a compact and stable design. Standard capped T-seals consist of four pieces; an NBR energizer, a 15% glass + 5% moly reinforced PTFE cap, and two PA anti-extrusion rings. Suitable for pressures up to 10,000 PSI.

Part Numbers:



* Caterpillar equivalent style

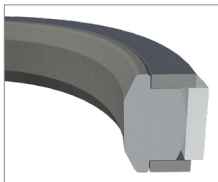
Example: CTS 2500 - Capped T-seal, NBR Energizer, Moly/Glass Reinforced PTFE Cap, Two PA Anti-Extrusion Rings, 2 - 1/2" Nominal ID



Capped T-Seals

A Bore Diameter Range	A Tol.	B Groove Diameter Calculation	B Tol.	C Groove Width	D Groove Depth	Maximum extrusion gap (e) e _{max} at 80°C (175°F)			
						2300 psi	3600 psi	5800 psi	10000 psi
1.000 - 2.875	+0.002/-0.000	Dia. A - 0.374	+0.000/-0.002	0.424	0.187	0.026	0.017	0.010	0.006
3.000 - 4.875	+0.003/-0.000	Dia. A - 0.480	+0.000/-0.003	0.579	0.240	0.040	0.025	0.016	0.009
5.000 - 16.000	+0.004/-0.000	Dia. A - 0.730	+0.000/-0.004	0.750	0.365	0.053	0.034	0.021	0.012

*** Caterpillar Four Piece**



Part Number	CAT Number	A Bore Diameter	B Groove Diameter	C Groove Width
CAT 45004	8J3747	4.500	3.830	0.500
CAT 50004	9J7868	5.000	4.220	0.640
CAT 55004	8J8767	5.500	4.720	0.640
CAT 60004	9J1242	5.090	6.000	0.640
CAT 62504	9J5558	6.250	5.340	0.640
CAT 65004	8J8703	6.500	5.590	0.640
CAT 70004	8J3749	7.000	6.090	0.640
CAT 72504	8J4510	7.250	6.340	0.640

Part Number	CAT Number	A Bore Diameter	B Groove Diameter	C Groove Width
CAT 75004	9J5567	7.500	6.590	0.640
CAT 77504	8J5644	7.750	6.840	0.640
CAT 82504	8J4390	8.250	7.260	0.640
CAT 85004	3G4762	8.500	7.500	0.640
CAT 100004	9J3406	10.000	8.880	0.690
CAT 105004	3G4765	10.500	9.380	0.690
CAT 115004	9J2987	11.500	10.380	0.690

Our Caterpillar parts are not original equipment parts. Caterpillar part numbers are only provided as a reference.