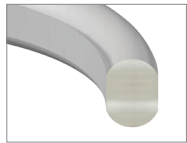
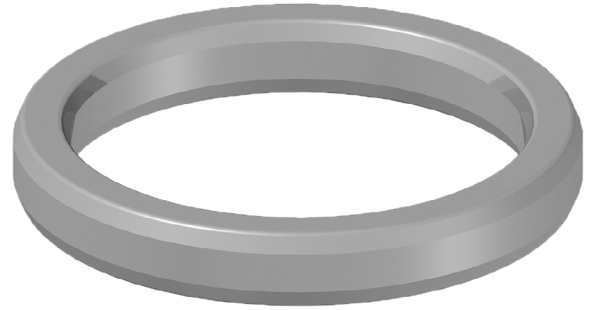
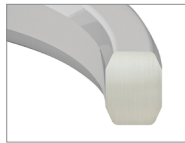


Materials	Temp. Range
Stainless Steel 304	-200°C to 460°C
Stainless Steel 316	-200°C to 420°C
Low Carbon Steel	-100°C to 500°C
Soft Iron	-100°C to 500°C

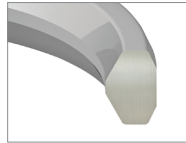
*Stainless steel 316 and 304 can exceed their continuous operating temperatures, up to 760°C, for short-term intervals. However, this may result in intergranular corrosion.



R Oval



R Octagonal



RX

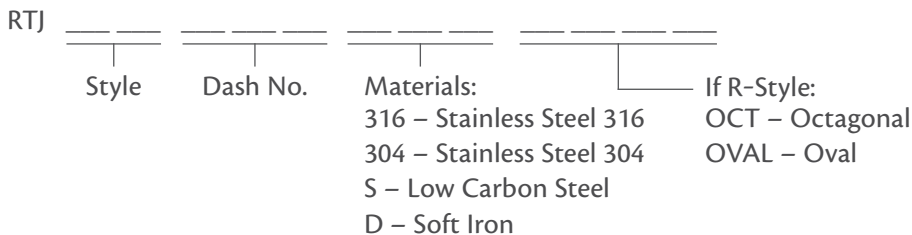


BX

Product Description

Hi-Tech Seals stocks ring type joint gaskets in R oval, R octagonal, RX, and BX styles in rubber and coated styles. In addition, we offer BoKure™ urethane ring type joint gaskets (RTJU) and rubber coated styles.

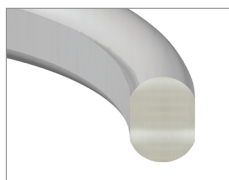
Part Numbers:



Example: RTJ R20 316 OVAL – Ring Type Joint Gasket, R Style, Size 20, Stainless Steel 316, Oval profile

Ring Type Joint Gaskets

R Series



R Oval



R Octagonal

Metal RTJ R-Series are manufactured in accordance with ASME B16.20 or API 6A, and are rated up to 5000 psi.

Used in the following flange designations: API 6A, ASME B16.5 and ASME B16.47 SERIES A.

R-series ring type joint gaskets are available in oval and octagonal designs. The oval design can be used in older round-bottom gland designs, while both can be used in a flat-bottom design.

Ring #	Pressure Class Ratings							
	ASME B16.5 & ASME B16.47 Series A					API 6A (psi)		
	150	300/600	900	1500	2500	2000	3000	5000
Nominal Pipe Sizes								
R 11	-	1/2	-	-	-	-	-	-
R 12	-	-	1/2	1/2	-	-	-	-
R 13	-	3/4	-	-	1/2	-	-	-
R 14	-	-	3/4	3/4	-	-	-	-
R 15	1	-	-	-	-	-	-	-
R 16	-	1	1	1	3/4	-	-	-
R 17	1 1/4	-	-	-	-	1	1	1
R 18	-	1 1/4	1 1/4	1 1/4	1	1 1/4	1 1/4	1 1/4
R 19	1 1/2	-	-	-	-	-	-	-
R 20*	-	1 1/2	1 1/2	1 1/2	-	1 1/2	1 1/2	1 1/2
R 21	-	-	-	-	1 1/4	-	-	-
R 22	2	-	-	-	-	-	-	-
R 23*	-	2	-	-	1 1/2	-	-	-
R 24*	-	-	2	2	-	-	2	2
R 25	2 1/2	-	-	-	-	-	-	-
R 26*	-	2 1/2	-	-	2	2 1/2	-	-
R 27*	-	-	2 1/2	-	-	-	2 1/2	2 1/2
R 28	-	-	-	-	2 1/2	-	-	-
R 29	3	-	-	-	-	-	-	-
R 30 (a)	-	3	-	-	-	-	-	-
R 31*	-	3	3	-	-	3	3	-
R 32	-	-	-	-	3	-	-	-
R 33	3 1/2	-	-	-	-	-	-	-
R 34	-	3 1/2	-	-	-	-	-	-
R 35*	-	-	-	3	-	-	-	3
R 36	4	-	-	-	-	-	-	-
R 37*	-	4	4	-	-	4	4	3 1/2
R 38	-	-	-	-	4	-	-	-
R 39*	-	-	-	4	-	-	-	4
R 40	5	-	-	-	-	-	-	-
R 41*	-	5	5	-	-	5	5	-
R 42	-	-	-	-	5	-	-	-
R 43	6	-	-	-	-	-	-	-
R 44*	-	-	-	5	-	-	-	5
R 45*	-	6	6	-	-	6	6	-
R 46*	-	-	-	6	-	-	-	6

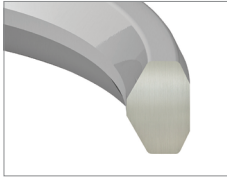
* Denotes ring number specified in API 6A.

a) R30 Ring Type Joint used for lapped joint only.

Ring #	Pressure Class Ratings							
	ASME B16.5 & ASME B16.47 Series A					API 6A (psi)		
	150	300/600	900	1500	2500	2000	3000	5000
	Nominal Pipe Sizes							
R 47*	-	-	-	-	6	-	-	6
R 48	8	-	-	-	-	-	-	-
R 49*	-	8	8	-	-	8	8	-
R 50*	-	-	-	8	-	-	-	8
R 51	-	-	-	-	8	-	-	-
R 52	10	-	-	-	-	-	-	-
R 53*	-	10	10	-	-	10	10	-
R 54*	-	-	-	10	-	-	-	10
R 55	-	-	-	-	10	-	-	-
R 56	12	-	-	-	-	-	-	-
R 57*	-	12	12	-	-	12	12	-
R 58	-	-	-	12	-	-	-	-
R 59	14	-	-	-	-	-	-	-
R 60	-	-	-	-	12	-	-	-
R 61	-	14	-	-	-	14	14	-
R 62	-	-	14	-	-	-	-	-
R 63*	-	-	-	14	-	-	-	-
R 64	16	-	-	-	-	-	-	-
R 65*	-	16	-	-	-	16	-	-
R 66*	-	-	16	-	-	-	16	-
R 67	-	-	-	16	-	-	-	-
R 68	18	-	-	-	-	-	-	-
R 69*	-	18	-	-	-	18	-	-
R 70*	-	-	18	-	-	-	18	-
R 71	-	-	-	18	-	-	-	-
R 72	20	-	-	-	-	-	-	-
R 73*	-	20	-	-	-	20	-	-
R 74*	-	-	20	-	-	-	20	-
R 75	-	-	-	20	-	-	-	-
R 76	24	-	-	-	-	-	-	-
R 77	-	24	-	-	-	-	-	-
R 78	-	-	24	-	-	-	-	-
R 79	-	-	-	24	-	-	-	-
R 80	22	-	-	-	-	-	-	-
R 81	-	22	-	-	-	-	-	-
R 93	-	26	-	-	-	-	-	-
R 94	-	28	-	-	-	-	-	-
R 95	-	30	-	-	-	-	-	-
R 96	-	32	-	-	-	-	-	-
R 97	-	34	-	-	-	-	-	-
R 98	-	36	-	-	-	-	-	-
R 99*	-	-	-	-	-	8?	8?	-
R 100	-	-	26	-	-	-	-	-
R 101	-	-	28	-	-	-	-	-
R 102	-	-	30	-	-	-	-	-
R 103	-	-	32	-	-	-	-	-
R 104	-	-	34	-	-	-	-	-
R 105	-	-	36	-	-	-	-	-

* Denotes ring number specified in API 6A.

RX Series



RX

Metal RTJ RX-Series are manufactured in accordance with ASME B16.20 or API 6A, and are rated up to 5000 psi.

Used in the following flange designations: API 6A, ASME B16.5 and ASME B16.47 SERIES A.

RX-series are interchangeable with R-series octagonal gaskets.

Ring #	Pressure Class Ratings - API 6A (psi)		
	2000	3000	5000
	Nominal Pipe Sizes (inches)		
RX 20	1 1/12	1 1/12	1 1/2
RX 23	2	-	-
RX 24	-	2	2
RX 25	-	-	3 1/8
RX 26	2 1/2	-	-
RX 27	-	2 1/2	2 1/2
RX 31	3	3	-
RX 35	-	-	3
RX 37	4	4	-
RX 39	-	-	4
RX 41	5	5	-
RX 44	-	-	5
RX 45	6	6	-
RX 46	-	-	6
RX 47	-	-	8
RX 49	8	8	-
RX 50	-	-	8
RX 53	10	10	-
RX 54	-	-	10
RX 57	12	12	-
RX 63	-	-	14
RX 65	16	-	-
RX 66	-	16	-
RX 69	18	-	-
RX 70	-	18	-
RX 73	20	-	-
RX 74	-	20	-
RX 201	-	-	13/8
RX 205	-	-	1 13/16
RX 210	-	-	2 9/16
RX 215	-	-	4 1/16

Metal RTJ BX-Series are manufactured in accordance with ASME B16.20, API 6A and API 17D, and are rated up to 20000 psi.

Only used in API 6BX flanges.

BX-series ring type joint gaskets feature a pressure relief vent.



BX

Ring #	Nominal Size	Pressure Class Ratings - API 6BX Flanges (psi)					
		2000	3000	5000	10000	15000	20000
		Nominal Pipe Sizes (inches)					
BX 150	43	-	-	-	1 11/16	1 11/16	-
BX 151	46	-	-	-	1 13/16	1 13/16	1 13/16
BX 152	52	-	-	-	2 1/16	2 1/16	2 1/16
BX 153	65	-	-	-	2 9/16	2 9/16	2 9/16
BX 154	78	-	-	-	3 1/16	3 1/16	3 1/16
BX 155	103	-	-	-	4 1/16	4 1/16	4 1/16
BX 156	179	-	-	-	7 1/16	7 1/16	7 1/16
BX 157	228 (229)	-	-	-	9	9	9
BX 158	279	-	-	-	11	11	11
BX 159	346	-	-	-	13 5/8	13 5/8	13 5/8
BX 160	346	-	-	13 5/8	-	-	-
BX 161	425 (422)	-	-	16 3/4	-	-	-
BX 162	425 (422)	-	-	16 3/4	16 3/4	16 3/4	-
BX 163	476	-	-	18 3/4	-	-	-
BX 164	476	-	-	-	18 3/4	18 3/4	-
BX 165	540	-	-	21 1/4	-	-	-
BX 166	540	-	-	-	21 1/4	-	-
BX 167	679 (680)	26 3/4	-	-	-	-	-
BX 168	679 (680)	-	26 3/4	-	-	-	-
BX 169	130	-	-	-	5 1/8	-	-
BX 170	228 (168)	-	-	-	6 5/8	6 5/8	-
BX 171	279 (218)	-	-	-	8 9/16	8 9/16	-
BX 172	346 (283)	-	-	-	11 5/32	11 5/32	-
BX 303	762	30	30	-	-	-	-