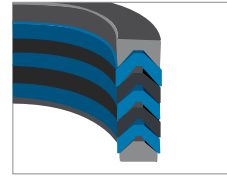




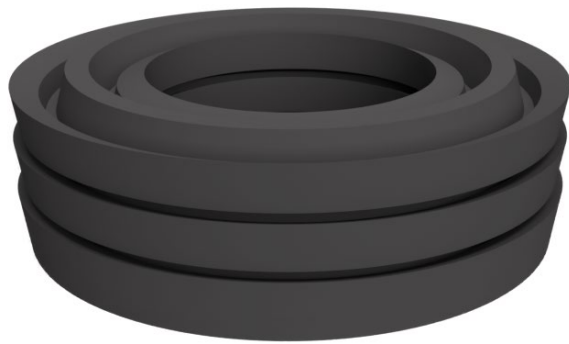
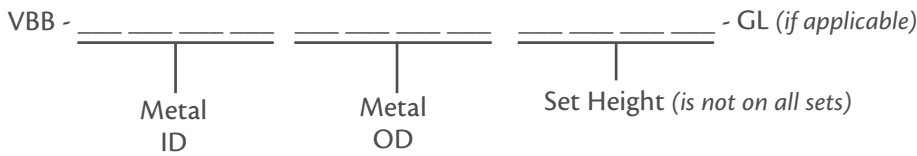
## Blue/Black Sets



Our Blue/Black Vee packing sets are constructed of Hytre® (blue) and nylon (black) Vees. The sets' material properties make it ideal for operation in fire resistant fluids. Blue/Black Vee packing sets are commonly used in heavy equipment and mining applications.

Sets ending with a GL include the guidelock component. Guidelocks can also be purchased separately through us. Additional sizes and sets are available upon request.

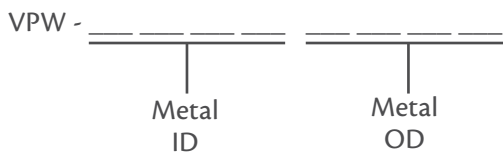
Vee Packing



## W-Packing

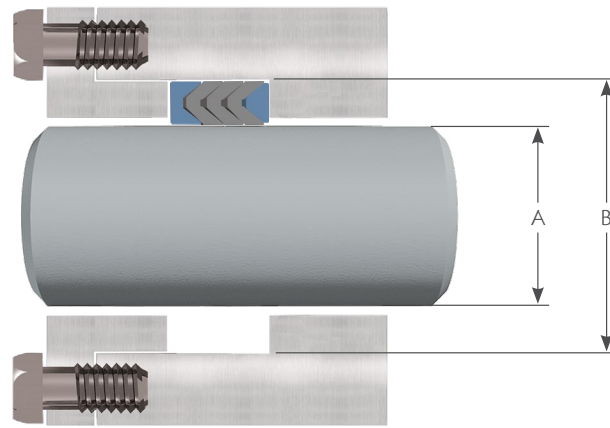
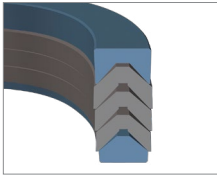


Our W-Packing sets are composed of one adapter with two different configurations. These sets are not pre-loaded and operate strictly on system pressure. W-Packing sets are commonly used in non-adjustable applications.



# Vee Packing

## Chemical Injection Sets



Vee Packing

Chemical injection sets are designed for use in service pumps and valves. Our materials are available in various materials, including nitrile (NBR), rock hard, PTFE, fluorocarbon (FKM), and fluorosilicone (FVMQ). We also offer High-Performance Packing (HPP) featuring virgin PTFE top (female) and bottom (male) vee, with middle vees composed of a high fluorine content polymer compounded to give much higher chemical resistance.

### Common Sizes

A Metal ID	B Metal OD
3/16	3/4
1/4	7/8
3/8	7/8
1/2	1
3/4	1 1/4
7/8	1 3/8
1	1 1/2
1 1/4	1 3/4



High Performance Packing (HPP)